

Apollo Two-Ram Baler

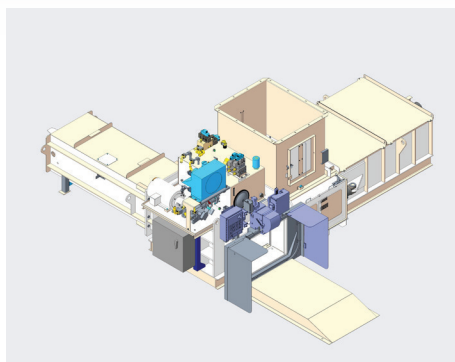


Apollo Two-Ram Baler Features

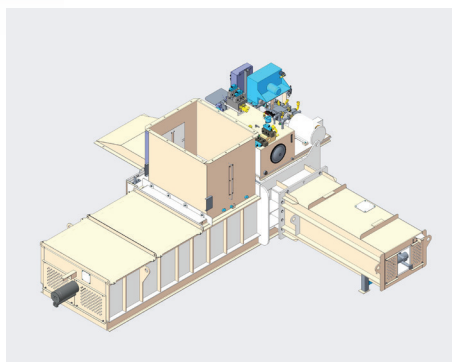
- ▼ *Engineered to bale medium-density recyclable fibers, plastics, and UBC*
- ▼ *Full-penetration compaction ram produces high-density bales*
- ▼ *Easily switch between various recyclable materials with the programmable controller*
- ▼ *Multi-purpose door can serve as a bale separator, bale release, or bale clamp*

The Worldwide Leader in Quality Recycling and Compaction Equipment

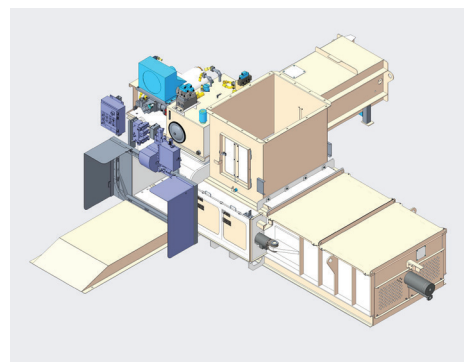
Marathon® Equipment is known throughout the world as one of the leading manufacturers of quality on-site recycling products. The Marathon brand has been the industry standard for quality and innovation for more than 50 years, and includes auto-tie balers, manual-tie balers, two-ram balers, MRF systems, conveyors, vertical balers, cart dumpers, and a wide array of options for virtually any application.



FRONT VIEW



REAR VIEW



SIDE VIEW



**Environmental
Solutions Group®**

Apollo Two-Ram Baler

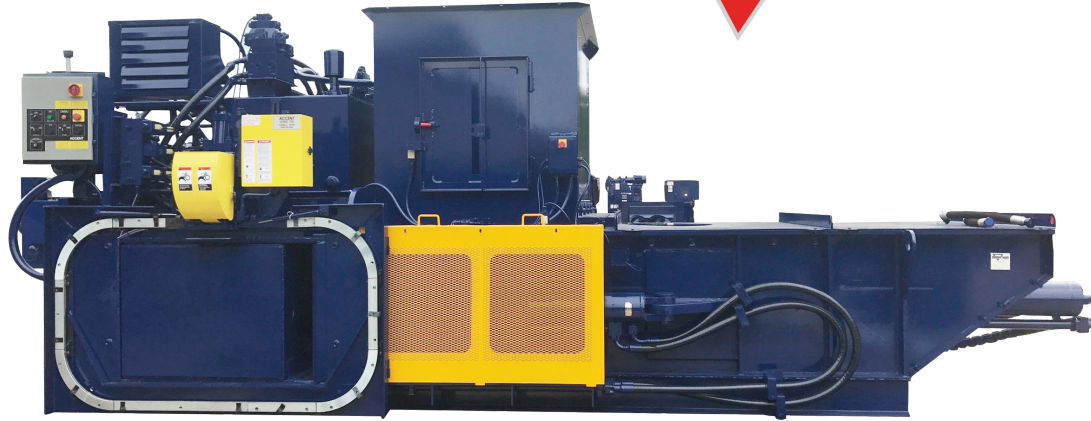
Features

Standard Features

- ▼ Automatic Accent model 470 wire tier standard
- ▼ Adjustable gib bars (hold-downs) from outside the machine
- ▼ Infrared actuators (two sets)
- ▼ Regenerative hydraulic circuit
- ▼ Ram shear blade is replaceable and reversible
- ▼ Body shear blade is serrated and replaceable
- ▼ Free-standing operator center with PLC controls and 10" color touchscreen interface

Optional Features

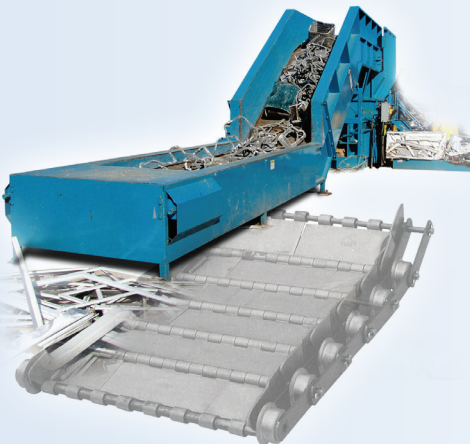
- ▼ Hopper monitoring system
- ▼ Conveyor controls with VFD or motor starter
- ▼ Oil heater
- ▼ Tongue-and-groove floor



Powerful and Efficient Baling

The Marathon Apollo two-ram wide-model baler was designed for smaller applications that our other Galaxy® 2R balers may not be able to fit. The Apollo features a full-penetration compaction ram to produce high-density bales. The programmable PLC controller comes standard and features automatic and manual controls, diagnostics, and bale set-up functions. This controller also allows for easy switching between recyclable materials.

The Apollo two-ram wide-model baler also features a multi-purpose door that can serve as a bale separator, bale release, or bale clamp. As with our other Galaxy 2R wide-model balers, the Apollo comes with components such as a high-efficiency power unit, adjustable shear beam, replaceable and reversible shear blades, and main ram and ejector-ram laser positioning.



EZ-TRAX Conveyors

Marathon Recycling Solutions offers custom engineered conveying systems to handle a wide variety of bulk material and scrap-handling applications. These range from light-duty slider beds to heavy-duty steel belt conveyors and complete turnkey MRF systems.

Factory Start-ups

Marathon provides on-site set-up and comprehensive baler operation training for your personnel.

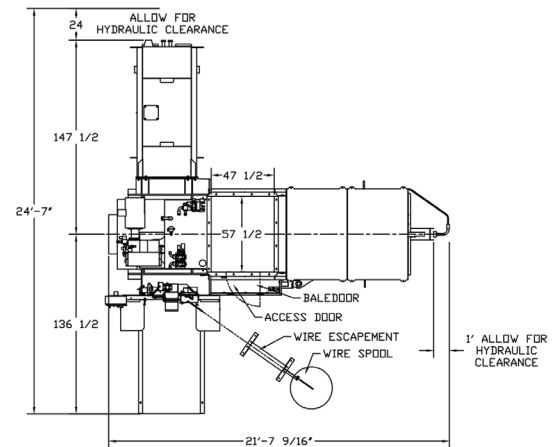
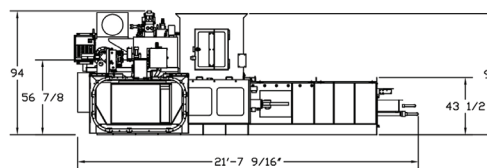
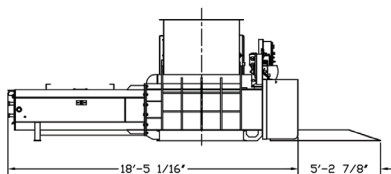
Apollo Two-Ram Baler

Dimensions & Specifications

Specifications		2R-150-48
Power Unit	30 hp	22 kW
Hydraulic Pump	75 gpm	284 L/min
Cycle Time* (no load averages)	16.3 seconds	
Compressing Force	Up to 150,800 lbf	Up to 672 kN
Feed opening (L x W)	47 1/2" x 57 1/2"	1207mm x 1461mm
Baler size (L x W x H)	259 1/16" x 295 7/16" x 92"	6579mm x 7493mm x 2337mm
Baler Weight	34,000 lbs.	15422 kg
Compressing cylinder bore	8"	202mm
Compressing cylinder rod	6"	152mm
Compressing cylinder stroke	88 1/2"	2248mm
Bale Weight Data		
OCC	Up to 1,250 lbs.	Up to 567 kg
*Cycle time calculated based on 1/2 penetration into bale chamber		
** Subject to maximum recommended material size		

Pictures and mechanical diagrams in this literature are illustrative only and may not be to scale. Specifications are subject to change without notice in order to accommodate improvements to the equipment. Certified in compliance with ANSI standard Z245.2, all applicable OSHA Regulations. Products must be used only by trained operators in accordance with the operator manual, as well as applicable regulations, laws, and ANSI standards.

Apollo Two-Ram Baler Dimensions



We're Here To Help!

For detailed specifications, recommendations, or to request a site survey comparing various systems, contact the Marathon Customer Care team at: **800.633.8974**

Authorized Dealer:



Marathon Equipment Company | P.O. Box 1798 | Vernon, AL 35592-1798

Learn more about Marathon Equipment: 800.633.8974 | www.marathonequipment.com

© 2025 Marathon Equipment Company. All rights reserved.



www.marathonequipment.com

Contact your Marathon® authorized dealer: