

OPERATION, MAINTENANCE, AND INSTALLATION MANUAL



5 HP Submerged Power Unit



Marathon Equipment Company
OMI Manual No. 0075-1, Revision Date: June 2010
www.marathonequipment.com

Table of Contents

OPERATION

Introduction to Greenbuilt Power Units	1-1
Introduction to the Submerged Power Unit	1-2
Pressure Settings and Cycle Times	1-2
Recommended Oil	1-2
Power Unit Drawing	1-3
Power Unit Parts List	1-4
Typical Electrical Schematic for the GB RJ-225	1-5
Typical Electrical Schematic for the GB RJ-250	1-6

OPERATION

Introduction to Greenbuilt Power Units

Thank you for choosing a Marathon Greenbuilt® Power Unit!

The purpose of this manual is to provide the owner and operators with the necessary information to properly and safely install, operate, and maintain the GreenBuilt® Power Units. This manual is intended as a supplement to the OMI Manual that is specific to your compactor model.

The employer involved in the operation, maintenance, and installation of the compactor and GreenBuilt Power Unit should read and understand the most current version of the following applicable standards:

ANSI Standard No. Z245.2, "Stationary Compactors Safety Requirements"

A copy of this standard may be obtained from ANSI (www.ansi.org):

25 West 43rd Street
New York, NY 10036

OSHA Title 29 CFR, Part 1910.147

"The Control of Hazardous Energy (Lock-Out and Tag-Out)" (www.osha.gov)

Any service or repair instructions contained in this manual should be performed by factory authorized personnel only.

If you should need assistance, please contact your distributor. When contacting your distributor, you will need to provide:

- Serial Number: _____
- Installation Date: _____
- Electrical Schematic Number: _____

If you have any safety concerns with the equipment, or need further information, please contact us at 1-800-633-8974 or:

**Marathon Equipment Company
Attn: Field Service Department
P.O. Box 1798
Vernon, AL 35592-1798**

Introduction to the Submerged Power Unit

This section of the manual contains information regarding the GreenBuilt 5 HP Submerged Power Unit, which is designed to significantly reduce energy consumption while maintaining comparable performance to our standard 10 HP power unit. The basic function and operation of the GreenBuilt Submerged Power Unit is no different than the traditional power unit used in Marathon's compactors. A diagram and replacement parts lists may be found on the following pages, along with examples of typical electrical schematics. Please consult the *Operation, Maintenance, and Installation* manual specific to your compactor model for operating instructions, periodic maintenance, and installation guidelines.

To see a demonstration of pump and motor accessibility for a submerged power unit, please watch the video on our website by clicking on the following link:

<http://www.marathonequipment.com/videoSubmergedPowerUnit.htm>

Pressure Settings and Cycle Times

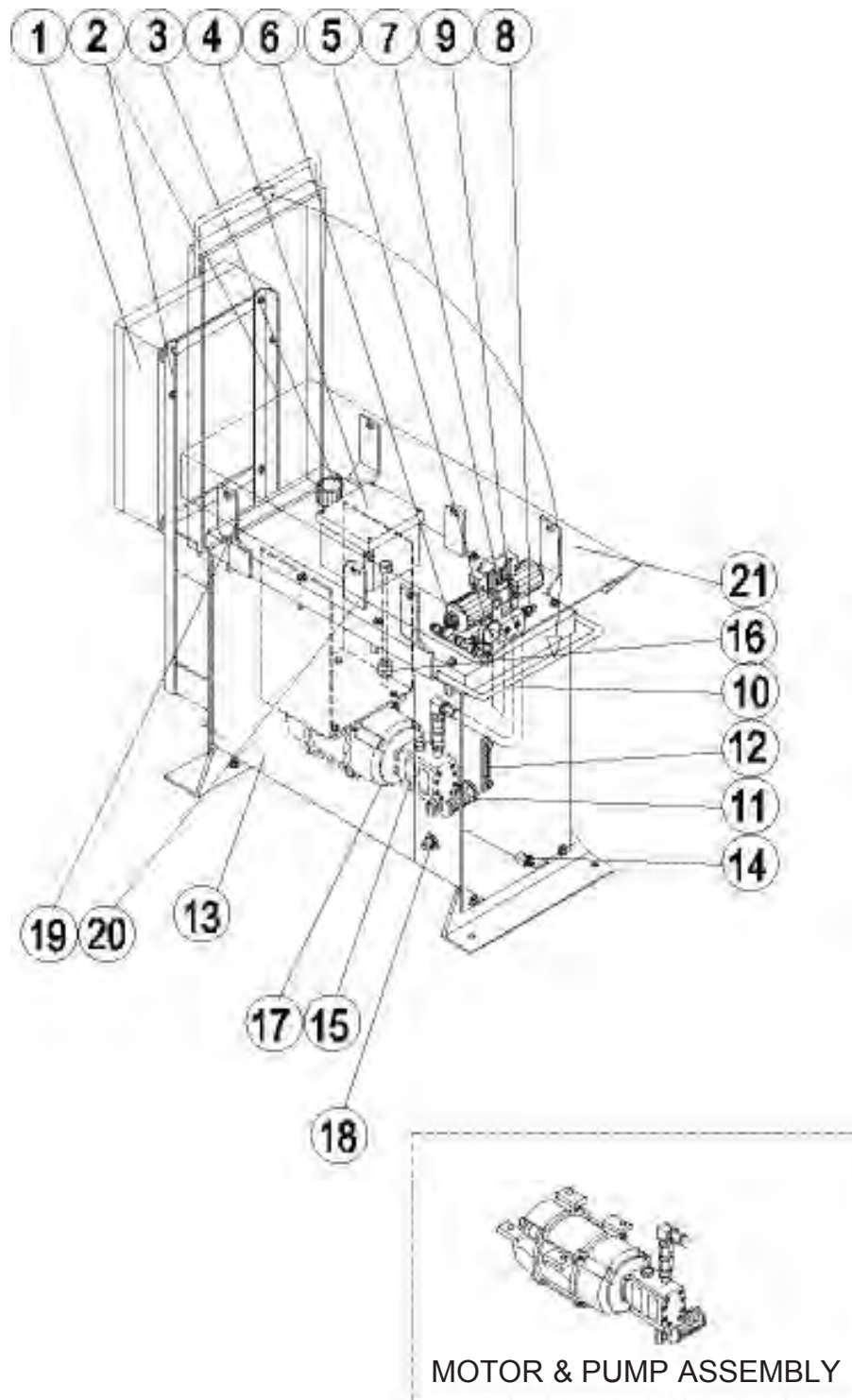
The pressure settings and cycle times can be referenced in the *Operation, Maintenance, & Installation* manual that is specific for your compactor. There may be some variation in the performance of the GreenBuilt 5 HP Submerged Power Unit in comparison to the standard power unit for your compactor.

Recommended Oil

BioHydran AW 46

Power Unit Drawing

Match the reference numbers with the chart on the next page for parts descriptions.



Power Unit Parts List

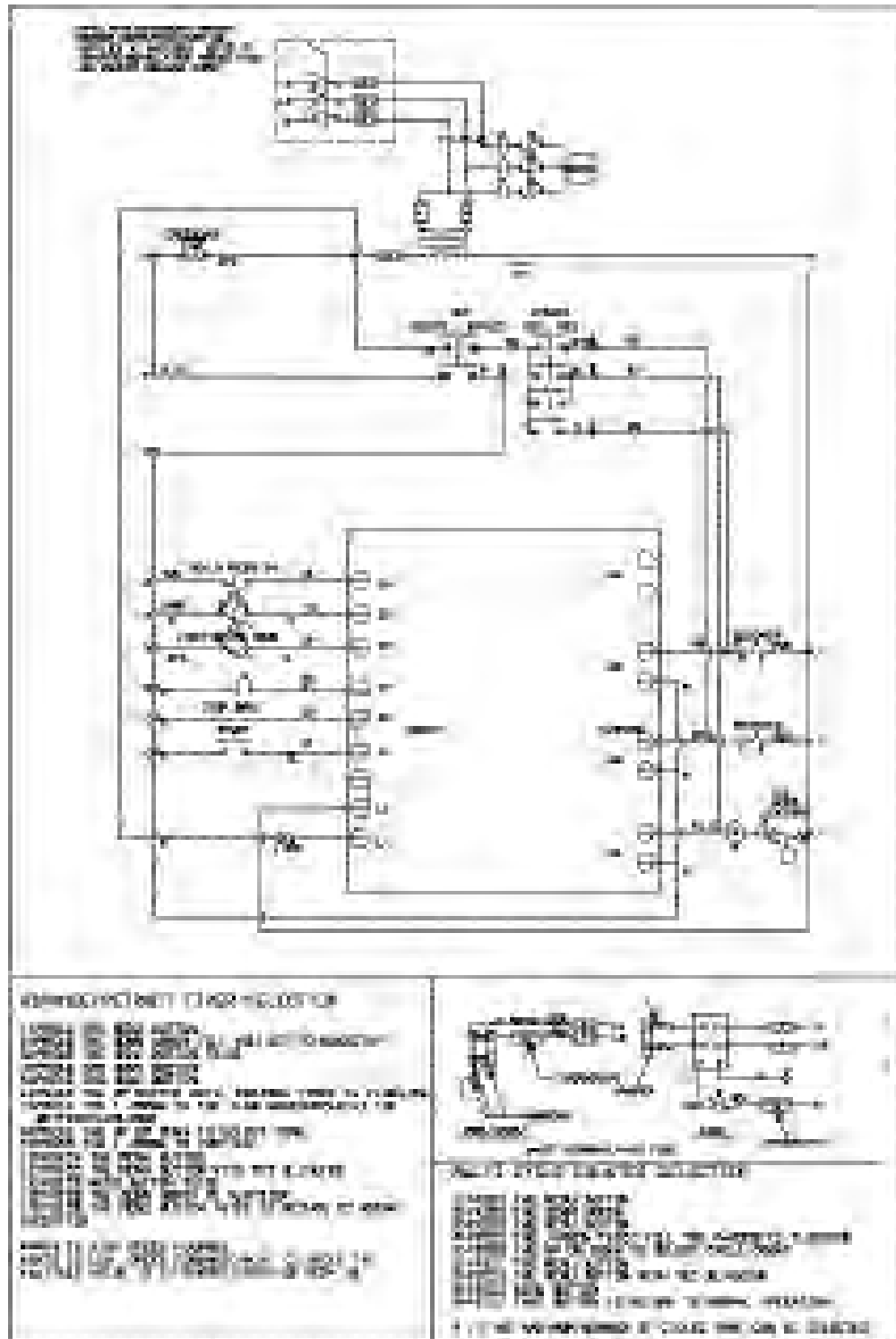
Match the following reference numbers to the drawing on the previous page.

Ref#	Part #	Description
1	03-5480	Control Panel
2	Call	Mounting Brackets for Lid Hold-up Tabs
3	02-0197	Breather Cap
4	Call	Junction PVC Box
5	02-5094	Pressure Gauge 4000 psi
6	03-0658	Pressure Switches
7	99-8310	Valve
8	02-0389	Relief Valve
9	02-4991	Submersible Subplate
10	02-5095	Inline Check Valve
11	02-4993	Strainer
12	02-0215	5" Sight Gauge
13	02-5100	Reservoir
14	02-0179	1/2" Drain Plug
15	02-5130	Pump 22 GPM
16	02-4992	Float Switch
17	03-5536	5.5 HP 3 PH Submersible Motor 1700 rpm
18	Call	1 1/4" Plug for optional oil heater
19	Call	Weather Cover Brackets (4)
20	Call	Lid Hold-up Tab
21	Call	Weather Cover

To order replacement parts, please call **1-800-633-8974** and ask for the Parts Department or log on to **www.parts1stop.com** to place your order online.

Typical Electrical Schematic for the GB RJ-225

The electrical schematic has been sent with your compactor and can be found in the panel box of the power unit. If it becomes lost or if you have questions regarding it, please call **1-800-633-8974** and ask for the **RamJet Service Department**.



Typical Electrical Schematic for the GB RJ-250

The electrical schematic has been sent with your compactor and can be found in the panel box of the power unit. If it becomes lost or if you have questions regarding it, please call **1-800-633-8974** and ask for the **RamJet Service Department**.

