

## Stealth

Manual-Tie Horizontal Baler



*Stealth Baler  
60" configuration pictured*



### Stealth Series Features

- ▼ Specifically designed for baling OCC and similar materials
- ▼ Available in 60" or 72" bale length
- ▼ Hydraulic bale door release
- ▼ Hand-feed-type hopper
- ▼ Customizable for your application

### The Worldwide Leader in Quality Recycling and Compaction Equipment

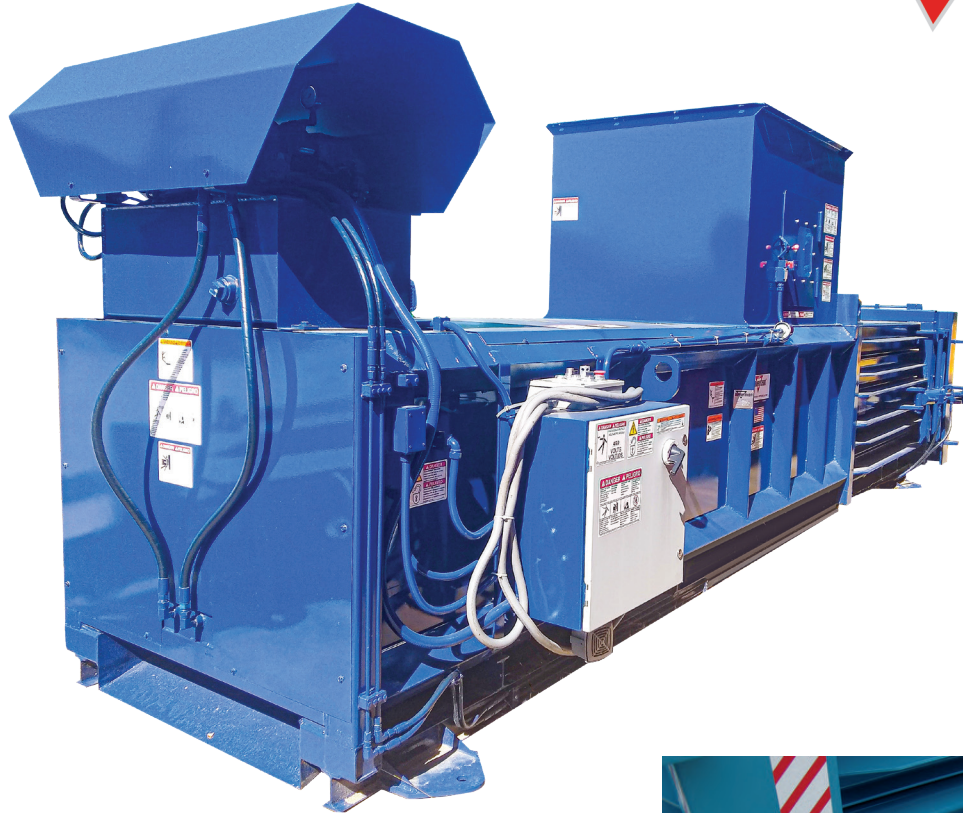
Marathon® Equipment is known throughout the world as one of the leading manufacturers of quality on-site recycling products. The Marathon brand has been the industry standard for quality and innovation for more than 50 years, and includes auto-tie balers, manual-tie balers, two-ram balers, MRF systems, conveyors, vertical balers, auger-style compactors, cart dumpers, and a wide array of options for virtually any application.



**Environmental  
Solutions Group®**

## Stealth Horizontal Baler

### Features



### Stealth Horizontal Baler Standard Features

- ▼ 46" x 60" feed opening
- ▼ Available in 60" or 72" bale length
- ▼ Standard hand-feed-type hopper
- ▼ Hydraulic bale door release
- ▼ Up to two tons-per-hour throughput (OCC)
- ▼ Through-door and side tie-off
- ▼ Start-up alarm
- ▼ Control panel equipped with electrical disconnect switch
- ▼ Bale made alarm

### Stealth Horizontal Baler Optional Features

- ▼ Photocell control
- ▼ Chute-feed hopper
- ▼ In-feed conveyor
- ▼ Cart dumper



#### Hydraulic Door Latch

*The Marathon Stealth balers feature a hydraulic door latch.*



#### Optional Chute-Feed Hopper

*The optional chute-feed hopper with inspection door and interlock switch will accommodate pneumatic, gravity, or conveyor feeding systems.*



- Transfer Compactors
- Horizontal Balers
- Conveyors

# MARATHON WARRANTY

## The best coverage in the business

Marathon® Equipment is pleased to announce the release of our updated Warranty Coverage program. This warranty will take effect and be applicable on all products sold on or after June 1st, 2021. Note that this warranty plan is not retroactive to products sold prior to June 1st, 2021.

### 5 Yr. Structural, 1 Yr. Parts, 1 Yr. Labor

#### Marathon Compactor & Recycling Solutions Warranty

Our existing Signature Series® Warranty, Compactor Warranty, and Auger Warranties have been combined into a new Compaction Solutions Warranty. The Compaction Solutions Warranty includes 3-years structural warranty, 2-years part warranty, and 1-year labor warranty.

To learn more, visit: [www.marathonequipment.com/warranty](http://www.marathonequipment.com/warranty)



## Connected Collections®

### 1 BACK-OF-STORE CONNECTED ASSET SOLUTIONS



### 1 Focus on the front of the store, we've got the back.

The ultimate solution for peace of mind, efficiency, and productivity.

### 2 Marathon provides a full suite of value-added needs.

New and Marathon® Certified Remanufactured compactors and balers, digital connectivity, and waste stream monitoring to minimize your waste-related expenses and maximize recycling revenue.

Digital connectivity enables asset monitoring, assists with predictive maintenance, and connection to hauler operations.

Partnership with Marathon supports your long-term sustainability objectives - and provides documentary evidence of your performance.

### 3 All the information you need at the tips of your fingers.

3rd Eye provides a complete dashboard view of the waste and recycling programs for your entire enterprise.



# MANUAL-TIE HORIZONTAL BALERS

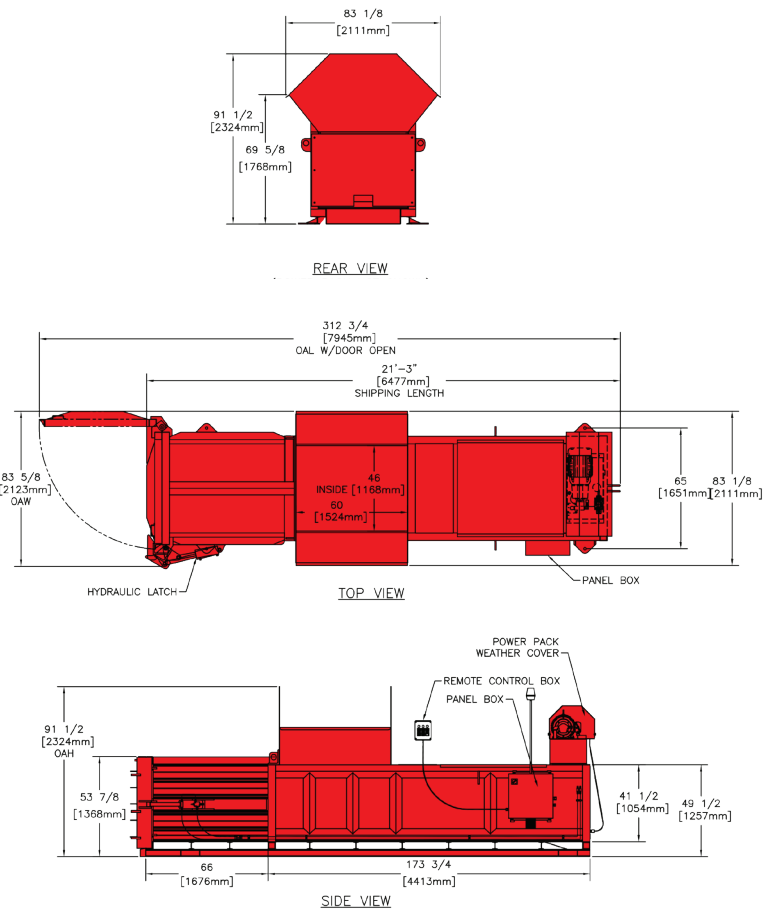


## Stealth Manual-Tie Horizontal Baler

### Dimensions & Specifications

Specifications	Stealth 60"	Stealth 72"
Bale Size	42" x 48" x 60" 1067mm x 1219mm x 1524mm	42" x 48" x 72" 1067mm x 1219mm x 1829mm
Bale Weight (OCC)	Up to 1,500 lbs. Up to 680 kg	Up to 1,500 lbs. Up to 680 kg
Throughput	Up to 2 tons per hour Up to 1800 kg per hour	Up to 2 tons per hour Up to 1800 kg per hour
Performance Characteristics		
Maximum System Pressure	2,400 psi 165 bar	2,400 psi 165 bar
Maximum Force	67,900 lbf. 302 kN	67,900 lbf. 302 kN
Ram-Face Pressure	43 psi 296.5 kPa	43 psi 296.5 kPa
Cycle Time	50 sec.	50 sec.
Weight (dry)	12,600 lbs. 5715 kg	13,000 lbs. 5897 kg
Electrical Equipment		
Electric Motor 460 / 3-Phase	20 hp 14.9 kW	
Electric Control Voltage	120 VAC	
Hydraulic Equipment		
Pump Type	Gear	
Pump Flow	18.5 gpm 70 L/min.	
Reservoir	30 gal. 113.6 L	
Hydraulic Cylinders (Bore)	6" 152mm	
Hydraulic Cylinders (Rod)	4" 102mm	
Hydraulic Cylinders (Stroke)	82" 2083mm	

Pictures and mechanical diagrams in this literature are illustrative only and may not be to scale. Specifications are subject to change without notice in order to accommodate improvements to the equipment. Certified in compliance with ANSI standard Z245.2 and all applicable OSHA Regulations. Products must be used only by trained operators in accordance with the Operator Manual, as well as applicable regulations, laws, and ANSI standards.



Dimensions	Length	Width	Height	Hopper Type	Feed Opening (L x W)	Feed Height
<b>Stealth 60"</b>	255"	83 5/8"	91 1/2"	Hand Feed	46" x 60"	69 5/8"
	6477mm	2123mm	2324mm		1168mm x 1524mm	1768mm
<b>Stealth 72"</b>	267"	83 5/8"	91 1/2"	Hand Feed	46" x 60"	69 5/8"
	6782mm	2123mm	2324mm		1168mm x 1524mm	1768mm

#### We're Here To Help!

For detailed specifications, recommendations, or to request a site survey comparing various systems, contact the Marathon Customer Care team at: **800.633.8974**

#### Authorized Dealer:



**Marathon Equipment Company | P.O. Box 1798 | Vernon, AL 35592-1798**

**Learn more about Marathon Equipment: 800.633.8974 | www.marathonequipment.com**

© 2025 Marathon Equipment Company. All rights reserved.