

DON'T SETTLE FOR REBUILT

DISCOVER THE MARATHON REMANUFACTURED DIFFERENCE!

Genuine OEM Parts - Same Warranty as a New Unit!

Marathon® Certified Remanufactured (MCR) Centers nationwide are the ONLY facilities certified by Marathon Equipment. This ensures that all remanufactured units meet the highest standards of excellence, both in craftsmanship and with the use of genuine OEM parts. Every MCR Center receives regular, up-to-date support, starting with the experts at Marathon. With MCR equipment, you can be assured that you are dealing with a shop that's local, qualified, and fully prepared to get your unit back to like-new condition.



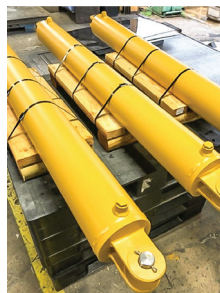
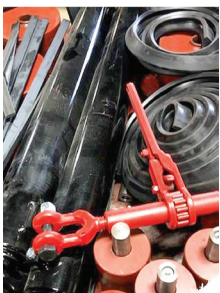
MARATHON CERTIFIED REMANUFACTURED PROGRAM

- ▼ Lower Price with our exclusive "As New Warranty"
- ▼ Faster Lead-time and Availability
- ▼ OEM Parts, Processes, Quality
- ▼ We Remanufacture All Major Competitive Brands
- ▼ Nationwide Certified Remanufactured Centers
- ▼ Same Level of Support as New Equipment
- ▼ The Sustainable Choice

MARATHON CERTIFIED PARTS KITS/ASSEMBLIES

- ▼ Ready to Install and Assemble
- ▼ Efficient, Productive, and Convenient
- ▼ Various Equipment Types
- ▼ Retrofit/Upgrade Competitive Brands
- ▼ In Stock With "Off the Shelf" Availability
- ▼ Tailored to your needs

MARATHON EQUIPMENT GENUINE OEM PARTS KITS



MARATHON CERTIFIED REMANUFACTURED (MCR) PROGRAM

SELF-CONTAINED COMPACTOR SCOPE OF WORK DETAILS



DISASSEMBLY, POWER WASH, AND SANDBLAST



REPLACE AND REPAIR*

Only NEW Genuine Parts & Assemblies

Standard minimum work:

- Hydraulic Power Unit (PPK)
- Cylinders, pins, spacers, and bushings
- All hydraulic hoses and fittings
- Hydraulic quick disconnects (male & female), both sides of packer
- Dump door seal and mounting retainer
- Ram guide shoes and hardware
- Wheels/rollers and axles
- Ram assembly and pinning plate (non-Marathon OEM equipment)
- Packer sump - watertight (front & rear)
- Serial number plate

Included as identified by core inspection:

- Fire ports (ANSI standard)
- Undercarriage rail liners/strips (replace or add)
- Ram assembly
- Ram guide strips
- Guide bars, drag plate/slide shield, wiper blade assembly
- Packer access covers (top/back) and hardware
- Container floor/sides, walls
- Packer floor, walls
- Dump door:
 - Re-Skin
 - Plate seal mating surface
 - Latch assembly
 - Hinges
- Hook, bull nose and roller brackets
- Ratchet



WATER TEST



COMPREHENSIVE FUNCTIONAL/OPERATIONAL TEST



SURFACE PREP, PRIMER AND PAINT



ANSI AND OSHA SAFETY AND INFORMATION DECALS



QUALITY INSPECTION (REPORT PROVIDED TO CLIENT)

*Added charge options:

- Complete New Packer Assembly
- Complete New Dump Door Assembly
- New Structural Undercarriage Rails (2)



Contact Your Marathon Representative and Claim Yours Today!

www.MarathonEquipment.com | Call Us At **205-695-1796**